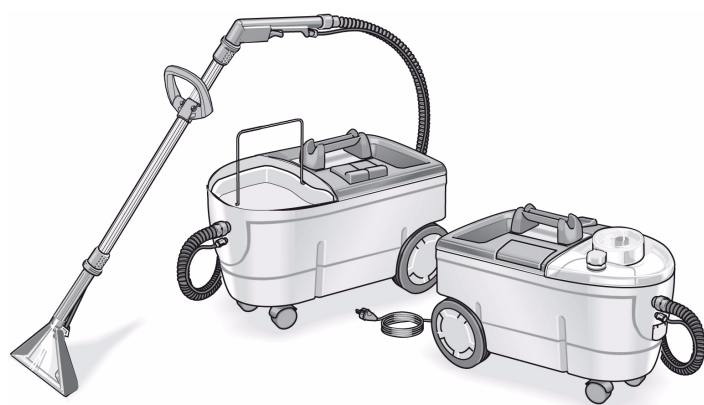


Puzzi 100
Puzzi 200

 **KÄRCHER**[®]

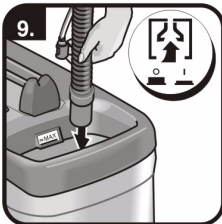
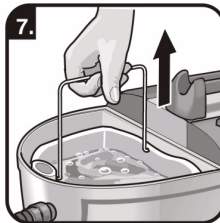
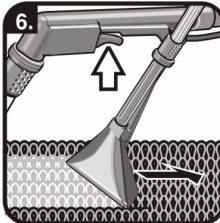
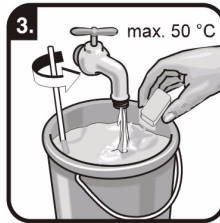
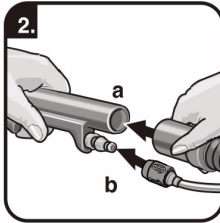
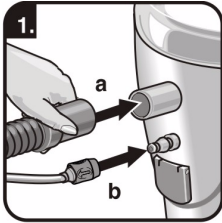
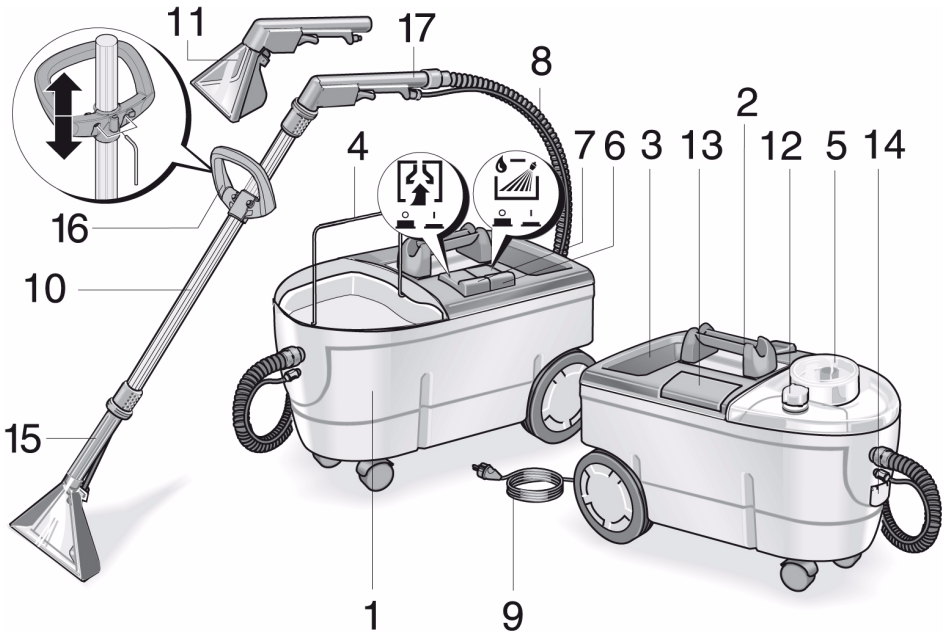


Deutsch	3
English	9
Français	16
Italiano	23
Nederlands	30
Español	37
Português	44
Dansk	51
Norsk	57
Svenska	63
Suomi	69
Ελληνικά	75
Türkçe	82
Русский	88
Magyar	95
Čeština	101
Slovenščina	107
Polski	113
Românește	120
Slovenčina	126
Hrvatski	132
Srpski	138
Български	144
Eesti	151
Latviešu	157
Lietuviškai	163
Українська	169

Register and win!
www.karcher.com



59566940 07/12





Please read and comply with these original instructions prior to the initial operation of your appliance and store them for later use or subsequent owners.

- Before first start-up it is definitely necessary to read the safety indications Nr. 5.956-251!
- The non-compliance of the operating and safety instructions may lead to damages of the appliance and to dangers for the operator and other persons.
- In case of transport damage inform vendor immediately

Contents

Environmental protection . . .	EN	. . . 1
Symbols in the operating instructions	EN	. . . 1
Proper use	EN	. . . 2
Overview of the appliance	EN	. . . 2
Start up	EN	. . . 2
Operations	EN	. . . 2
Cleaning methods	EN	. . . 3
Shutting down	EN	. . . 4
Transport	EN	. . . 4
Storage	EN	. . . 4
Maintenance and care	EN	. . . 5
Troubleshooting	EN	. . . 5
Spare parts	EN	. . . 5
Warranty	EN	. . . 5
EC Declaration of Conformity	EN	. . . 6
Technical specifications	EN	. . . 7

Environmental protection

	The packaging material can be recycled. Please do not throw the packaging material into household waste; please send it for recycling.
	Old appliances contain valuable materials that can be recycled; these should be sent for recycling. Batteries, oil, and similar substances must not enter the environment. Please dispose of your old appliances using appropriate collection systems.

Notes about the ingredients (REACH)

You will find current information about the ingredients at:

www.kaercher.com/REACH

Symbols in the operating instructions

Danger

Immediate danger that can cause severe injury or even death.

Warning

Possible hazardous situation that could lead to severe injury or even death.

Caution

Possible hazardous situation that could lead to mild injury to persons or damage to property.

Proper use

This device is intended for commercial use as a wet cleaning device for carpets as depicted in these operating instructions as well as in the descriptions and safety notes in the enclosed brochure "Safety indications for brush cleaning devices and spray extraction devices".

Overview of the appliance

Illustrations on Page 2

- 1 Casing
- 2 Carrying handle
- 3 Fresh water tank with sieve
- 4 Dirt water reservoir, removable
- 5 Cover
- 6 Switch for spraying
- 7 Switch for vacuuming
- 8 Spray/suction hose
- 9 Power cord
- 10 Suction pipe
- 11 Manual nozzle for upholstery cleaning (option)
- 12 Container for defoamer (Puzzi 200)
- 13 Storage container for detergent tabs (Puzzi 200)
- 14 Additional socket for professional PW 10
- 15 Floor nozzle for carpet cleaning
- 16 Handle
- 17 Bender

Start up

- ➔ Place suction pipe over floor nozzle and tighten union joint on the floor nozzle fingertight (left thread).

Caution

While connecting make sure that the spray tubes meet in the suction pipe and the floor nozzle.

- ➔ If needed, slide handle onto suction pipe and attach in the desired position using the enclosed hexagon socket wrench.

- ➔ Place the elbow over the suction pipe and tighten the union joint on the elbow fingertight.

Caution

While connecting make sure that the spray tubes meet in the suction pipe and the elbow.

Illustrations on Page 2

- ➔ Insert the suction hose into the suction hose connection on the appliance.

Insert the coupling of the fresh water hose into the fresh water connection of the appliance and lock into place.

see Figure 1

- ➔ Connect the suction hose to bender of the manual nozzle.

Connect the coupling of the fresh water hose to the bender and lock into place.

see Figure 2

The manual nozzle for upholstery cleaning (not included) is attached directly to the suction hose without the use of an elbow.

Selecting the nozzle

Carpeting	Floor nozzle (230 mm)
Upholstery, wall rugs, automobile interior cleaning	Manual nozzle (110 mm) *
Stairs	Carpet nozzle *

* not included in the delivery

Operations

Illustrations on Page 2

- ➔ Mix fresh water and detergent in a clean container (use the concentration recommended for the detergent).

see Figure 3

⚠ Warning

Health risk, risk of damage. Observe all indications on the detergent used.

Note

Warm water (max. 50°C) will increase the cleaning effect.

For considerate treatment of the environment use detergent economically.

- Fill detergent solution into the fresh water reservoir. The fill level must not exceed the "MAX" mark.

see Figure 4

- Insert dirt water reservoir into the appliance and attach lid.
- Plug in the main plug.
- Press the suction switch to turn on the suction turbine.

Press the spray switch to turn on the detergent pump.

see Figure 5

⚠ Warning

Risk of damage. Check the object to be cleaned prior to using the appliance in an inconspicuous place for colour fastness and water resistance.

- Use the lever on the bender to spray on detergent solution.
Run across the surface to be cleaned in overlapping paths. Pull the nozzle backwards (do not push).

see Figure 6

- In case of work interruptions, the floor nozzle can be stored in the handle.

see Figure 12

Empty the dirt water reservoir.

- If the dirt water reservoir is full, switch off the suction and spray switches.
- Remove the lid.
- Remove the dirt water reservoir from the appliance and empty it.

see figures 7 and 8

Cleaning methods

Normal soiling

- Spray and suction off detergent solution in one work cycle.

Note

A repeated suctioning without spraying will shorten the drying time.

Strong soiling or stains

- Apply detergent solution with suction turbine turned off and soak for 10 to 15 minutes.
- Clean the surface just like with normal soiling.
- In order to further improve the cleaning result, the surface can be recleaned using clear, warm water.

Cleaning tips

- Highly soiled spots should be pre-soaked and the detergent solution should soak 5 to 10 minutes.
- Always work from the light to the shade (from the window to the door).
- Always work from the cleaned to the uncleaned surface.
- The more sensitive the surface (oriental rugs, berbers, upholstery material) the lower the cleaning solution concentration should be.
- Rugs with jute backing can shrink if too much water is used and can bleed colours.
- Brush high-fiber rugs in the direction of the weave after cleaning (using a fiber brush or a scrubber).
- Water-proofing the fabric using Care Tex RM 762 after the wet cleaning prevents a quick resoiling of the textile surface.
- Do not step on cleaned surfaces until they have dried and do not place furniture on them to avoid pressure spots or rust stains.

- When cleaning previously shampooed carpets, foam will be generated in the dirt water reservoir. In such a case add Foam ex RM 761 to the dirt water reservoir.

Detergent

Carpet and upholstery cleaning	RM 760 powder
	RM 760 tabs
	RM 764 liquid
Defoaming	RM 760
Waterproofing carpets	RM 762
Mite removal	RM 765 Mitex

If you require further information please request the product information sheet and the DIN safety data sheet for the respective cleaning agent.

Shutting down

Empty the fresh water reservoir

- Switch off the spray and suction switches.
- Shortly activate the lever on bender to decrease the pressure.
- Separate bender from the spray/suction hose.
- Remove the lid.
- Insert the suction hose into the fresh water reservoir.
see Figure 9
- Press the suction switch to turn on the suction turbine.
- Empty the fresh water reservoir and switch the appliance off.
- Remove the dirt water reservoir from the appliance and empty it.

Cleaning the device

- Connect the bender (with suction pipe and nozzle) to the suction hose.
- Connect the coupling of the fresh water hose to the bender and lock into place.

- Fill approx. 2 litres of fresh water into the fresh water reservoir.
Do not add any detergents.
- Place nozzle into the dirt water reservoir.
- Press the spray switch to turn on the detergent pump.
see Figure 10
- Activate lever on bender and flush the appliance for appr. 1 to 2 minutes.
- Turn off the appliance.
- Disconnect the mains plug from the socket.
- Remove the dirt water reservoir from the appliance and empty it.
- Clean the external surfaces of the appliance.

Transport

Caution

Risk of injury and damage! Observe the weight of the appliance when you transport it.

- For transport, place suction pipe on the carrying handle and attach spray/suction hose to hook.
- When transporting in vehicles, secure the appliance according to the guidelines from slipping and tipping over.

Storage

Caution

Risk of injury and damage! Note the weight of the appliance in case of storage.

This appliance must only be stored in interior rooms.

Maintenance and care

Danger

*Danger of injury by electric shock.
First pull out the plug from the mains before carrying out any tasks on the machine.*

- Check high power cable, extension cables and hoses for damage every time before use.
- Remove all water from the appliance prior to longer periods of non-use to avoid offensive odours.
- Clean the sieve in the fresh water reservoir and the lint trap next to the dirt water reservoir regularly.

see Figure 11

Troubleshooting

Danger

*Danger of injury by electric shock.
First pull out the plug from the mains before carrying out any tasks on the machine.*

Get the electrical components checked and repaired only by authorised customer service persons.

Contact an authorised customer service person in case of problems not mentioned in this chapter or if you are in doubt or when you have been explicitly asked to do so.

No water exiting from nozzle

- Fill up fresh water reservoir.
- Check couplings on the fresh water hose for proper connection.
- Detach nozzle attachment and remove, clean or replace nozzle.
- Clean the sieve in the fresh water reservoir.
- Detergent pump defective, contact Customer Service.

Spray stream one-sided

- Clean nozzle mouthpiece.

Insufficient vacuum performance

- Check the correct positioning of the lid.

- Clean seal on lid and surface on the appliance.
- Clean the fluff filter.
- Check suction hose for blockages; clean if required.

Detergent pump noisy

- Fill up fresh water reservoir.

Spare parts

- Only use accessories and spare parts which have been approved by the manufacturer. The exclusive use of original accessories and original spare parts ensures that the appliance can be operated safely and trouble free.
- At the end of the operating instructions you will find a selected list of spare parts that are often required.
- For additional information about spare parts, please go to the Service section at www.kaercher.com.

Warranty

The warranty terms published by the relevant sales company are applicable in each country. We will repair potential failures of your appliance within the warranty period free of charge, provided that such failure is caused by faulty material or defects in manufacturing. In the event of a warranty claim please contact your dealer or the nearest authorized Customer Service centre. Please submit the proof of purchase.

EC Declaration of Conformity

We hereby declare that the machine described below complies with the relevant basic safety and health requirements of the EU Directives, both in its basic design and construction as well as in the version put into circulation by us. This declaration shall cease to be valid if the machine is modified without our prior approval.

Product: Spray extraction device

Type: 1.100-xxx

Type: 1.193-xxx

Relevant EU Directives

2006/42/EC (+2009/127/EC)

2004/108/EC

Applied harmonized standards

EN 55014-1: 2006 + A1: 2009

EN 55014-2: 1997 + A2: 2008

EN 60335-1

EN 60335-2-68

EN 61000-3-2: 2006 + A2: 2009

EN 61000-3-3: 2008

EN 62233: 2008

Applied national standards

-

The undersigned act on behalf and under the power of attorney of the company management.



H. Jenner
CEO



S. Reiser
Head of Approval

Authorised Documentation Representative
S. Reiser

Alfred Kärcher GmbH Co. KG

Alfred-Kärcher-Str. 28 - 40

71364 Winnenden (Germany)

Phone: +49 7195 14-0

Fax: +49 7195 14-2212

Winnenden, 2012/06/01

Technical specifications

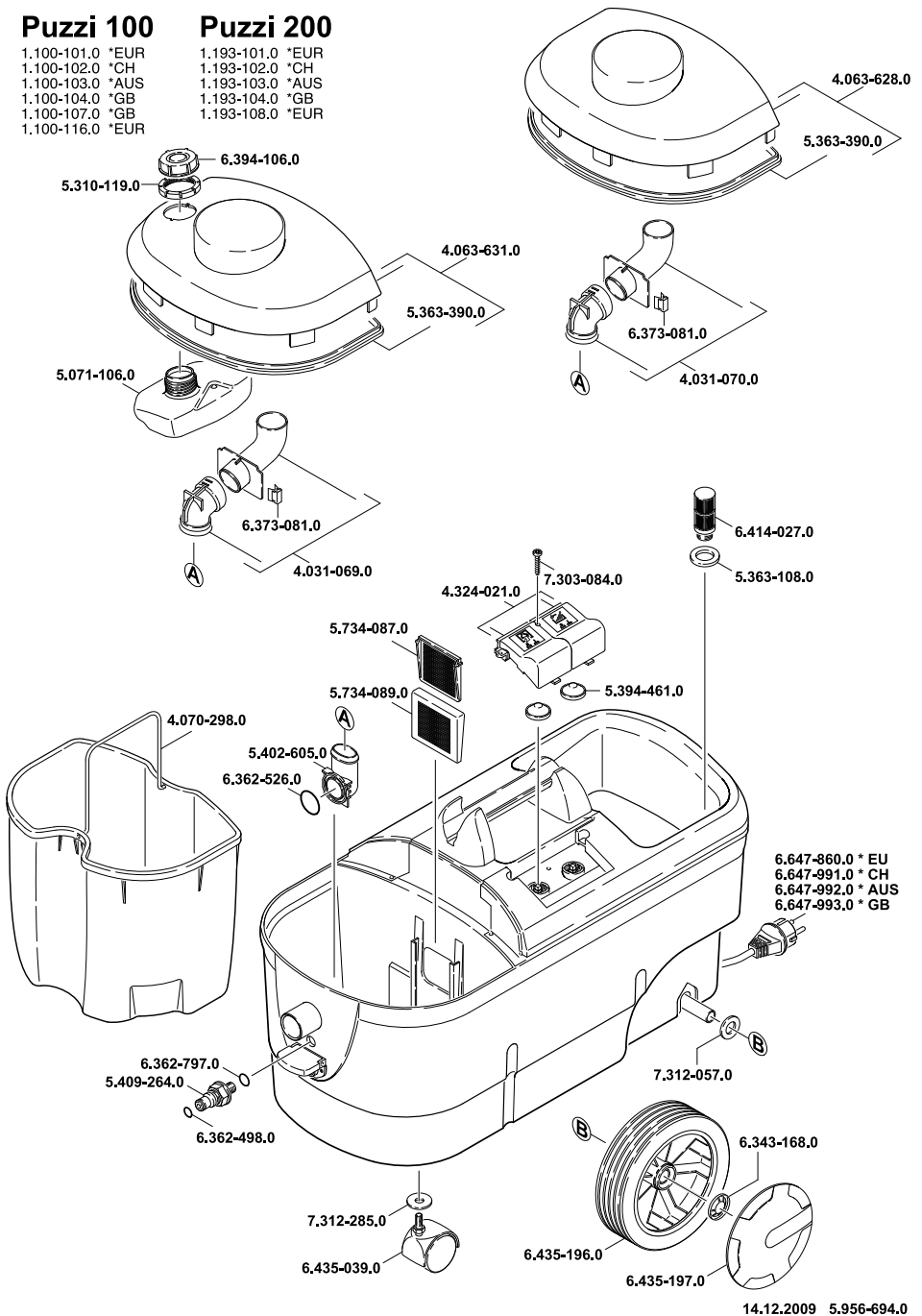
		Puzzi 100	Puzzi 200
Mains voltage	V	220-240	220-240
Frequency	Hz	50/60	50/60
Length of mains cable	m	7,5	7,5
Protective class	--	II	II
Type of protection	--	IPX4	IPX4
Blower motor performance (max)	W	1250	1250
Nominal performance of blower motor	W	1100	1100
Power (tot.)	W	--	1350
Air volume (max.)	l/s	54	54
Negative pressure (max.)	kPa (mbar)	22 (220)	22 (220)
Spray pump performance	W	40	80
Spray pressure	MPa	0,1	0,2
Spray pressure (max.)	MPa	0,3	0,3
Spray volume	l/m	1	2
Container capacity	l	14	14
Filling quantity of fresh water	l	10	10
Fill volume wastewater	l	9	9
Appliance socket performance (max)	W	250	250
Length x width x height	mm	665 x 320 x 435	665 x 320 x 435
Weight	kg	10,3	12,1
Max. ambient temperature	°C	50	50
Values determined to EN 60335-2-68			
Sound pressure level L_{pA}	dB(A)	68	68
Uncertainty K_{pA}	dB(A)	1	1

Puzzi 100

- 1.100-101.0 *EUR
- 1.100-102.0 *CH
- 1.100-103.0 *AUS
- 1.100-104.0 *GB
- 1.100-107.0 *GB
- 1.100-116.0 *EUR

Puzzi 200

- 1.193-101.0 *EUR
- 1.193-102.0 *CH
- 1.193-103.0 *AUS
- 1.193-104.0 *GB
- 1.193-108.0 *EUR



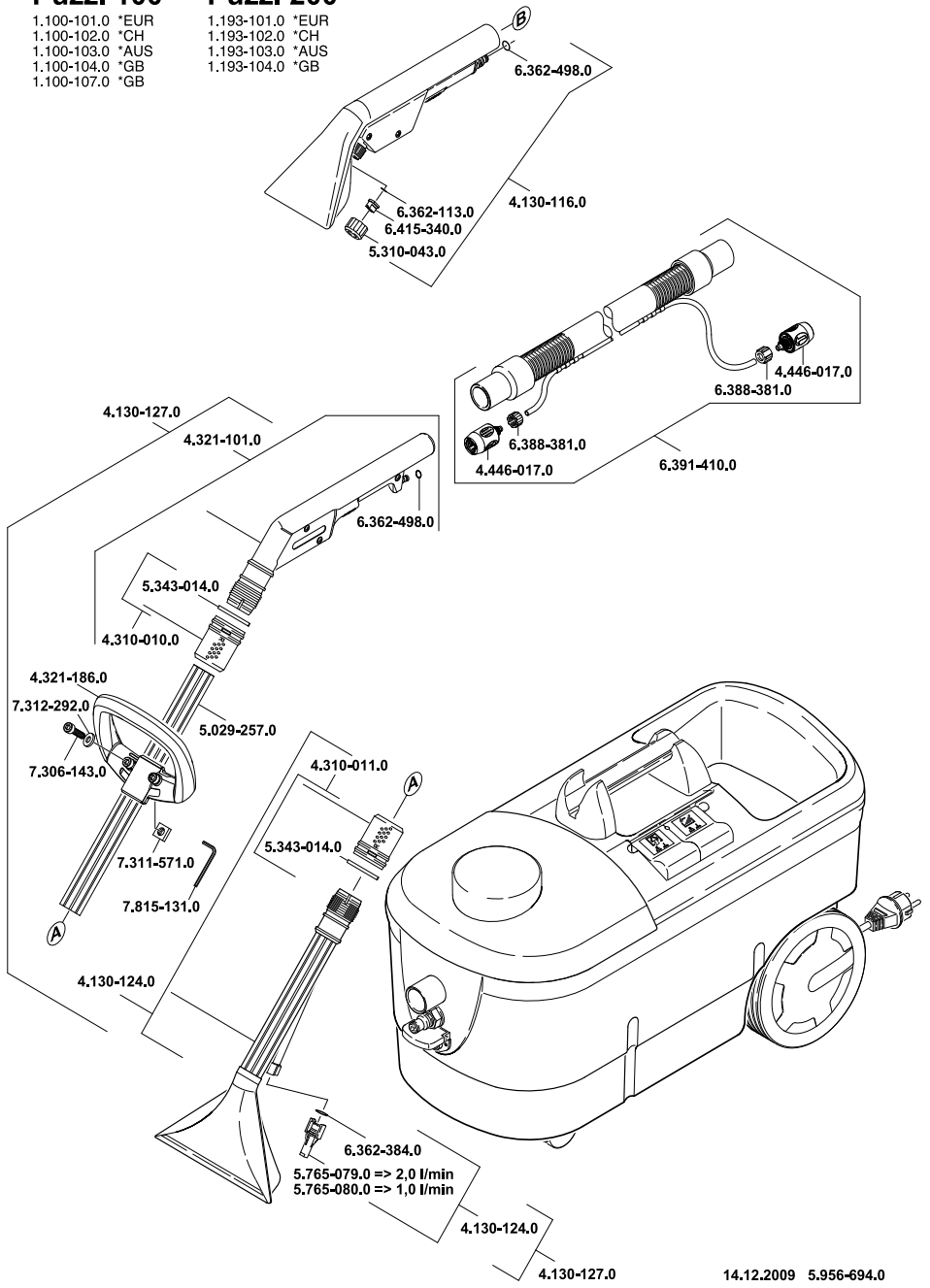
14.12.2009 5.956-694.0

Puzzi 100

- 1.100-101.0 *EUR
- 1.100-102.0 *CH
- 1.100-103.0 *AUS
- 1.100-104.0 *GB
- 1.100-107.0 *GB

Puzzi 200

- 1.193-101.0 *EUR
- 1.193-102.0 *CH
- 1.193-103.0 *AUS
- 1.193-104.0 *GB



14.12.2009 5.956-694.0